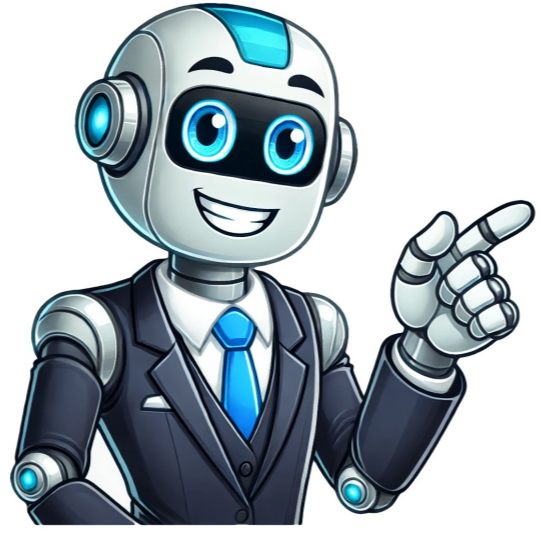


I'm not robot



****Important Safety Warnings and Precautions**** * The device has powerful electrical currents and can be hazardous to touch. Only use high-quality professional audio cables. * Installation and adjustment must only be performed by qualified professionals. * The product contains potentially lethal voltages, so do not open the top or back panel. * There are no user-serviceable components inside the device; send any repair requests to a qualified professional. ****Operating Precautions**** * Do not use this device near water or in humid conditions. Avoid liquids and containers with liquids near the device. * Only perform maintenance tasks specified in the manual, as improper repairs can cause electrical shock or fire hazards. * Use headphones with caution; keep the volume low before wearing them. ****Technical Parameters and Specifications**** * The product is designed for use at altitudes up to 2,000 meters and in non-tropical climates only. * Music Tribe Global reserves the right to change technical specifications and appearance without notice. * Trademarks are owned by their respective owners. ****Quick Start Guide**** The quick start guide provides an overview of the device's functions and settings. Key features include: * Frequency modulation (FM) for vibrato and pitch bend * Waveform generator with sine, sawtooth, and square wave options * Accent sweep and resonance controls for added expressiveness * Muffler switch for soft limiting and clipping protection * Headphones output for private monitoring ****Additional Features**** The device includes a 13-note keyboard for entering notes in pattern creation mode. Other features include: * Time mode for setting note duration and timing * Sync and triplet options for creating complex rhythms * Transpose function for adjusting pitch up or down by octaves To start using TD-3-MO, begin by connecting it to your system. The device is USB-compatible, so no drivers need to be installed. First, turn off the power to the device, then plug in the provided AC adapter and connect any additional audio equipment you have. Next, set up the clock type and synchronization settings according to your preference. To start playing with TD-3-MO, first ensure that the volume is turned down. Set the MODE switch to PATTERN PLAY and turn on the PITCH MODE switch while also pressing the PATTERN 6 button (pattern A). Press WRITE / NEXT several times until you hear a sound through your headphones or speakers. You can then adjust the tone by tuning into 220 Hz. The frequency can be adjusted, allowing for fine-tuning to other instruments. Finally, explore the device's capabilities further by using the additional controls and effects available on jumpers. TD-3-MO is an instrument designed to help musicians experiment with a wide range of sounds and musical experiences. 1. To start with TD-3-MO, begin with basic operations and become familiar with steps before they become routine. There are four pattern groups: I, II, III, and IV, with each group able to have up to 8 A patterns and 8 B patterns. Each pattern can have up to 16 steps, with the default step being a 16th note. A desired pattern of notes is entered in PITCH MODE first, followed by the timing in TIME MODE. 2. For example, let's program pattern 1A of pattern group I. First, turn the MODE switch to PATTERN WRITE and then the PATTERN GROUP switch to Group I. Press FUNCTION and the NORMAL MODE LED will be on. Then press the PATTERN 1 switch and its LED should also be on. 3. If the pattern already exists, press and hold the PATTERN 1 switch and then press CLEAR. If you do this, you won't hear a pattern when you start. Press START/STOP once to leave play mode. 4. Enter the number of steps required by holding FUNCTION down while pressing STEP until your desired amount is pressed. The default is 16 steps. 5. To enter notes, turn PITCH MODE on and press any note from the keyboard. To change a note's octave, hold one of the TRANSPOSE switches and then press the new note. 6. Listen to the pattern by turning PITCH MODE back on and pressing WRITE/NEXT until all notes are played or changing them individually. 1. To set the timing, press and hold three switches as shown above until you reach the required number of notes, then exit TIME MODE. For example, for 16 notes, press these three switches as follows: Note, Rest, Rest, Note, Tie, Note, Note, Tie, Note, Note, Tie, Note, Note, Tie, Note. 2. To play all the notes just as they are, repeatedly press the NOTE switch until you exit TIME MODE, creating a simple Arpeggio. 3. Press TIME MODE and then WRITE/NEXT to cycle through the pattern steps one at a time, checking that the timing is OK by looking at the LEDs. 4. If needed, repeat steps 14 and 15 to re-enter new timing. 5. Play the pattern by pressing FUNCTION to return to normal mode and then press START/STOP. 6. Alternatively, press FUNCTION and then START/STOP to play the existing pattern. 7. To add a metronome, press CLEAR and tap on the TAP switch in the desired timing, turning down the TEMPO if necessary. 8. Add Sustain by pressing and holding down TAP while tapping on the TAP switch. 9. Press PITCH MODE to play each note of the pattern in WRITE/NEXT mode. 10. To add an accent or a slide to a note, keep holding WRITE/NEXT; release it when past the desired note and press BACK. 11. If you press two or more PATTERN switches simultaneously, they will select both patterns and all patterns in between, playing them in order. 12. After creating a few patterns, rotate the MODE switch to TRACK WRITE position and then the TRACK switch to one of the available positions 1 to 7 to add them together and form a TRACK. To create a track, select the desired pattern group. For instance, TRACK 1 and 2 can only access patterns saved in PATTERN GROUP I, TRACK 3 and 4 are limited to selecting from PATTERN GROUP II.3. Pressing CLEAR resets the track back to its beginning. START/STOP initiates playback of the current selected pattern on the chosen track. Tracks are not written until the unit is playing, not stopped. To add a pattern, first select it by pressing the corresponding keys for the desired note and number. For example, press 2 (note D) followed by A (labeled 100), even if already selected, to play pattern 2A. Press WRITE/NEXT to include this pattern in the track. Next, choose another pattern and repeat the process. To transpose a pattern, hold PITCH MODE and select a new key. The playing pattern's pitch will shift to the chosen key. Press WRITE/NEXT after transposing. Continue adding patterns as instructed until reaching the last one. Press CLEAR to signal this is the final pattern in the track. Then press WRITE/NEXT, followed by START/STOP to finalize. For notes, use ACCENT and SLIDE functions as required, then release WRITE/NEXT. The ACCENT control knob affects only notes with ACCENT applied. In TRACK PLAY mode, if a slide ends a pattern, it will transition to the next one in the track. In PATTERN WRITE/PLAY mode, it slides to the beginning of itself for single patterns or the next pattern for multiple ones. Prevent accidental erasure by using PATTERN PLAY position instead of PATTERN WRITE during normal playback. Recall stored patterns by setting the MODE switch to PATTERN PLAY, selecting the desired pattern group, pressing FUNCTION, and then the appropriate switches. Press START/STOP to initiate playback. Adjust synthesizer controls as desired for a fun experience. Transposing a pattern involves holding PITCH MODE and then pressing one of the 13 keys on the keyboard. The current pattern's pitch will shift accordingly when played. While the pattern is playing, you can switch to another pattern by pressing 1 to 8 on the PATTERN switch or A and B. To stop the current pattern, press nished. Rotate the MODE switch to the TRACK PLAY position and then rotate the TRACK switch to the desired track. Press CLEAR to reset the track to the beginning. Then, press START/STOP to play the track. To remove a pattern from the track, follow these steps: Select the Pattern number by holding FUNCTION down and pressing the corresponding number. Hold FUNCTION down and press DEL (C sharp) to delete the selected pattern. Then, rotate the MODE switch to the TRACK PLAY position, press CLEAR, and start playing the track again. If you want to add a new pattern before the existing one, follow these steps: Select the Pattern number by holding FUNCTION down and pressing the corresponding number. Hold FUNCTION down and press INS (D sharp) to add the new pattern. Press START/STOP to play the current pattern added to the track. Then, select the desired pattern by pressing its selector 1 to 8 and A and B switches. Press TAP to store the change. You can overwrite an existing track with a new one without deleting all patterns in it. When playing the last pattern of the new track, it will automatically return to the beginning. ****Input/Output Options**** The TD-3-MO has various input/output options, including MIDI In and Out, 5-pin DIN USB (MIDI), and B-type output lines. The output levels are adjustable and can be set to +8 dBu. ****Power Requirements**** The device requires an external power adapter and consumes up to 4 watts of energy. It is recommended to use a high-quality power adapter to avoid damage to the device. ****Safety Precautions**** * Use only high-quality professional audio cables. * Only qualified professionals should install or adjust the device. * Avoid touching electrical components with bare hands. * Keep children away from the device. * Follow proper lifting and moving techniques when transporting the device. ****Technical Specifications**** The TD-3-MO has various technical specifications, including: * Frequency range: 20 Hz to 20 kHz * Polyphony: 16 voices (6 voices on each note) * Sample rate: 44.1 kHz * Bit depth: 24-bit ****Performance Options**** The device offers various performance options, including: * Override mode: increases the distortion level * Multistage mode: allows for more complex sound generation * Sustain mode: maintains the sound after the note is released * Delay mode: adds a delay effect to the sound ****TD-3-MO Quick Start Guide**** ****Overview**** This guide helps you set up the TD-3-MO analog synthesizer and briefly introduces its functions. To connect the TD-3-MO to your system, refer to the previous connection guidelines. ****Software Installation**** The TD-3-MO is a USB-compatible MIDI device, so no driver installation is required. It can be used with Windows and MacOS without any additional drivers. ****Hardware Installation**** Establish all connections in your system. When performing any connection, keep the TD-3-MO power off. Only use the power adapter provided with the TD-3-MO. Ensure that your audio system is turned off before opening any amplifier. Open and close the TD-3-MO at the end. ****Preheating Time**** We recommend preheating the TD-3-MO for 15 minutes or more before recording or live performance (longer if in a cold environment). This allows the precise analog circuitry to reach its normal operating temperature and tuning performance. ****Setting Sync and Clock Type**** 1. Select clock source INT, MIDI, or External. 2. Press Function. 3. Simultaneously press BACK and WRITE/NEXT to enter sync setting mode. 4. Adjust clock frequency (1PPS, 2PPQ, 24PPQ, or 48PPQ). 5. Save changes. ****Tuning**** To use the TD-3-MO's tuning function, follow these steps: 1. Ensure VOLUME is turned off. 2. Set MODE switch to PATTERN PLAY. 3. Press and hold PITCH MODE switch, then press PATTERN 6 (音符 A). 4. Each time you press WRITE/NEXT, you will hear the sound through headphones or speakers. 5. Adjust output frequency using TUNE knob to 220 Hz. 6. You can adjust frequency up or down and fine-tune to other instruments. ****Signal Flow**** The TD-3-MO's signal flow is as follows: (VCO), which can be controlled through WAVEFORM and TUNING. The TD-3-MO synthesizer has various waveforms that can be selected from pulse or sawtooth waves. You can experiment with different waveforms and hear how they affect the sound. The cutoff frequency and resonance controls allow for further manipulation of the sound. The envelope and decay controls adjust the cutoff frequency, affecting the VCF (Voltage-Controlled Filter). The accent control only affects notes that are assigned to the accent mode. The output is processed by a voltage-controlled amplifier (VCA) and can be connected to distortion or volume controls. The TD-3-MO also has a sequencer section for creating and playing back patterns. You can create 16-step patterns with up to eight A and B patterns each, with four pattern groups in total. Each pattern can have up to 16 steps, with the default step being a 16th note. To program a pattern, start by entering the notes in pitch mode, then add the timing for each note in time mode. For example, you can create pattern 1A of pattern group I by following these steps: enter the pattern group and switch to write mode, press the pattern 1 switch, then the pattern A switch and finally enter the number of steps required. Additional features include a distortion section, voltage-controlled amplifier (VCA), and outputs that can be connected to other devices or modules. The TD-3-MO also has a quick start guide for beginners, which includes basic operations and tutorials for getting started with the synthesizer. To return to the start of the pattern in PITCH MODE, press WRITE/NEXT. If you want to go back and change a note, press BACK, then select the new note. Continue playing notes until you've entered them all, or exit PITCH MODE. After entering all the notes, move on to TIME MODE by pressing its switch. In this mode, no sounds will be heard. You can play each note as is, add ties or rests using three switches, or create an Arpeggio by repeatedly pressing the NOTE switch. To check the timing, press WRITE/NEXT in TIME MODE and cycle through the pattern steps. Look at the LEDs to see which step is a note, tie, or rest. If you need to change the timing, repeat steps 14-15. When working with the TD-3-MO, navigating to a pattern you want to edit involves pressing BACK first, followed by holding WRITE/NEXT and entering TEMPOCLEAR PITCH MODE. To access additional features, press and hold a PATTERN switch while simultaneously pressing another one, allowing for the selection of multiple patterns in between to be played consecutively. This method is particularly useful for previewing various patterns before creating a track. After generating several patterns, you can combine them into a TRACK by following these steps: 1. Rotate the MODE switch to TRACK WRITE mode. 2. Rotate the TRACK switch to one of the available positions (1-7), which also selects the pattern group to use. For example, TRACK 1 and 2 can only access patterns saved in PATTERN GROUP I, while TRACK 3 and 4 are limited to patterns from PATTERN GROUP II. 3. Press CLEAR to reset the track to its beginning. 4. Press START/STOP to have the TD-3-MO play the current pattern of the selected track. Note that tracks can only be recorded while playing and not when stopped. 5. Select the first pattern to add to the track, such as a previously recorded pattern (2A), by pressing 2 (note D) followed by A (labeled 100). 6. Press WRITE/NEXT to include this pattern in the track. 7. Repeat steps 5 and 6 for each additional pattern. 8. To transpose a selected pattern, hold PITCH MODE while choosing a key; this will adjust the pitch of the playing pattern to the new key. 9. Press WRITE/NEXT after selecting the transposed pattern. 10. Continue adding patterns in the same manner until you reach the last one. 11. Press CLEAR to notify the TD-3-MO that it is the final pattern in the track. 12. Press WRITE/NEXT again and then START/STOP to finalize. In addition, while working with notes: 25. If desired, press ACCENT and/or SLIDE to apply these effects to a note, releasing WRITE/NEXT after applying them. 26. The ACCENT control knob will only affect those notes that have been designated for accent. 27-29: Special considerations exist regarding the use of slides at the end of patterns in TRACK PLAY mode versus PATTERN WRITE/PLAY mode. When engaging with the TD-3-MO, it is advisable to keep the MODE switch in PATTERN PLAY position during regular pattern playback to avoid accidentally erasing your patterns. 1. Switch between patterns by setting the Pattern Group switch to I, II, III, or IV, then use Pattern switches 1-8 and A/B switches. 2. Turn the Mode switch to Pattern Play position. 3. Select the desired pattern group. 4. Press Function switch; Normal Mode LED will turn on. 5. Press a pattern switch (1-8) and its LED will flash. 6. Press an A or B switch, and its LED will light. 7. Play the pattern by pressing Start/Stop switch. 8. Adjust synthesizer controls, tempo, and distortion for fun. 9. To transpose the current pattern to a key when restarting, press and hold Pitch Mode then press one of the 13 keyboard keys. 10. While playing, you can add another pattern or switch A/B before the current pattern finishes by pressing Start/Stop again. 快速启动指南：TD-3-MO 在使用 TD-3-MO 之前，请注意以下几点： * 新轨道将自动返回到开头。 * 可以通过以下方式连接 TD-3-MO：+ 使用 MIDI 输入/输出 + 使用 USB (MIDI) 端口

Behringer td 3 mo sr manual. Behringer td-3mo user manual. Behringer td-3mo demo. Behringer td-3mo tutorial. Behringer td 3 mo manual pdf.